

dry.power

Valve regulated lead-acid batteries



Motive Power Systems

Reserve Power Systems

Special Power Systems

Service

Your benefits with HOPPECKE dry.power

- **Maintenance-free regarding water refilling** - due to Absorbent Glass Mat-technology
- **Very good high-current capability** - low investment costs due to innovative electrode structure
- **Very good space utilization** - due to maximum energy density

Typical applications of HOPPECKE dry.power

- **Uninterruptible power supply (UPS)**
- **Telecommunications**
Mobile phone stations,
BTS-stations, off-grid/on-grid
solutions
- **Security lighting**



Similar to the illustration



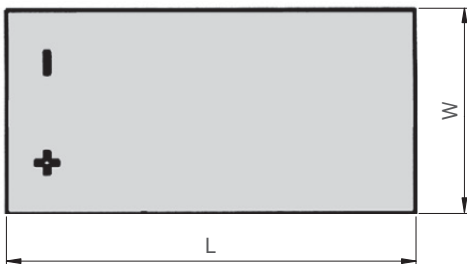
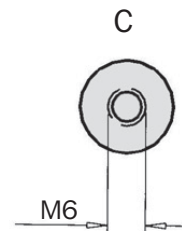
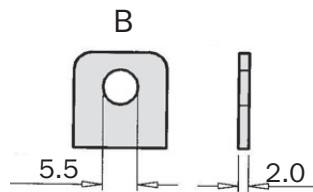
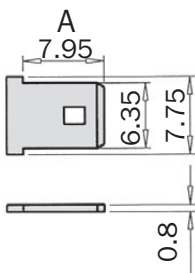
HOPPECKE

POWER FROM INNOVATION

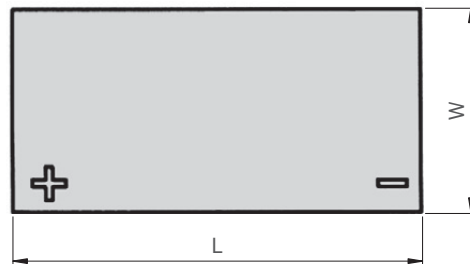
Type overview

Capacities, dimensions and weights

Type	C ₂₀ /1.75 V Ah	C _{1/2} /1.75 V Ah	C _{1/4} /1.70 V Ah	C _{1/6} /1.60 V Ah	Weight kg	Terminal Type	Length L mm	Width W mm	Height H mm
dry.power 12 V 7 Ah	7.2	3.7	3.3	3.1	2.9	A	151	65	100
dry.power 12 V 12 Ah	12.0	6.3	5.5	3.9	4.1	A	151	98	101
dry.power 12 V 18 Ah	18.0	9.5	8.3	5.7	6.1	B	181	77	167
dry.power 12 V 25 Ah	25.0	13.7	12.0	8.6	8.8	B	166	175	125
dry.power 12 V 33 Ah	33.0	18.4	16.1	14.6	11.0	C	195	130	168
dry.power 12 V 40 Ah	40.3	21.0	18.4	16.7	13.5	B	197	165	170



dry.power 12 V 18 Ah
dry.power 12 V 25 Ah
dry.power 12 V 33 Ah
dry.power 12 V 40 Ah



dry.power 12 V 7 Ah
dry.power 12 V 12 Ah

Design life: 3-5 years (according to EUROBAT)

Optimal environmental compatibility - closed loop for recovery of materials in an accredited recycling system